

Lumens[®]
Your Success, Our Passion!

VC-TR1

Auto-Tracking PTZ Camera



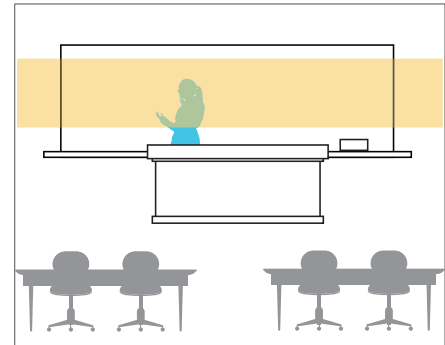
The PTZ Camera That Tracks It All

Automate live and on-demand video production and streaming for lecture capture, corporate training, house of worship and presentations.

Intelligent Auto Tracking Mode

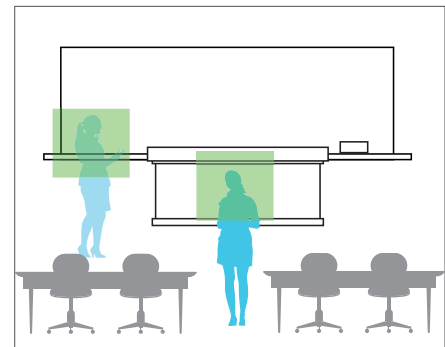
Stage Tracking

Focuses on a presenter standing on a stage or behind a lectern and tracks the speaker's movement across the stage area.



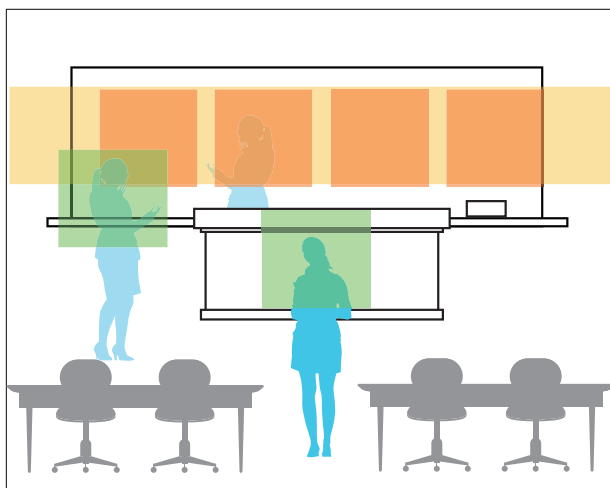
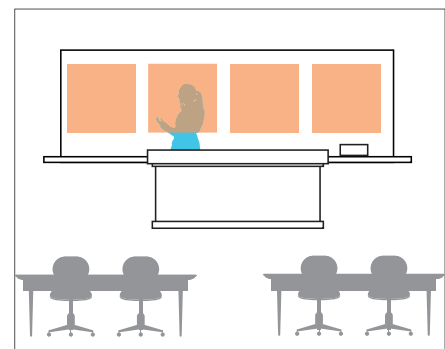
Everywhere Tracking

With this mode, the camera will follow the speaker even if they leave the stage to interact with the audience. The system will maintain the tracking even if the speaker is obscured by other people.



Partition Tracking

Creates up to four preset zones to allow a presenter to move in a specific area. The camera will capture both the content on the display and the presenter.



Super Tracking

This mode intelligently combines all of the modes above, enabling the speaker to present formally or interact with panelists and the audience.

Smart Self-Switching

The VC-TR1 combines a PTZ camera and a fixed 112° panoramic camera. With this design, it can capture an entire view and track a speaker simultaneously. The device can switch instantly between the two cameras. Audiences see not only a presenter but also the content on a whiteboard or presentation material.



Outstanding Video with 20x Optical Zoom

The lens of the VC-TR1 provides an incredible 20x optical zoom. It delivers brilliantly clear video, and exceptional optical accuracy at 1080p resolution.



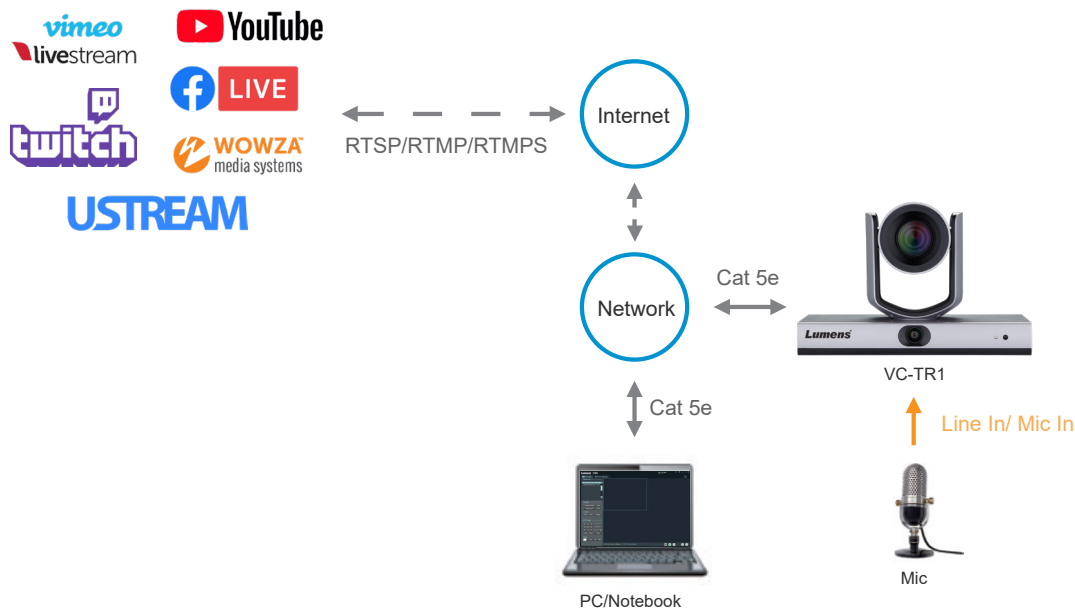
Easy Installation Solution

The VC-TR1 supports Power over Ethernet (PoE) and IP streaming to simplify AV integration. No camera controller is required.

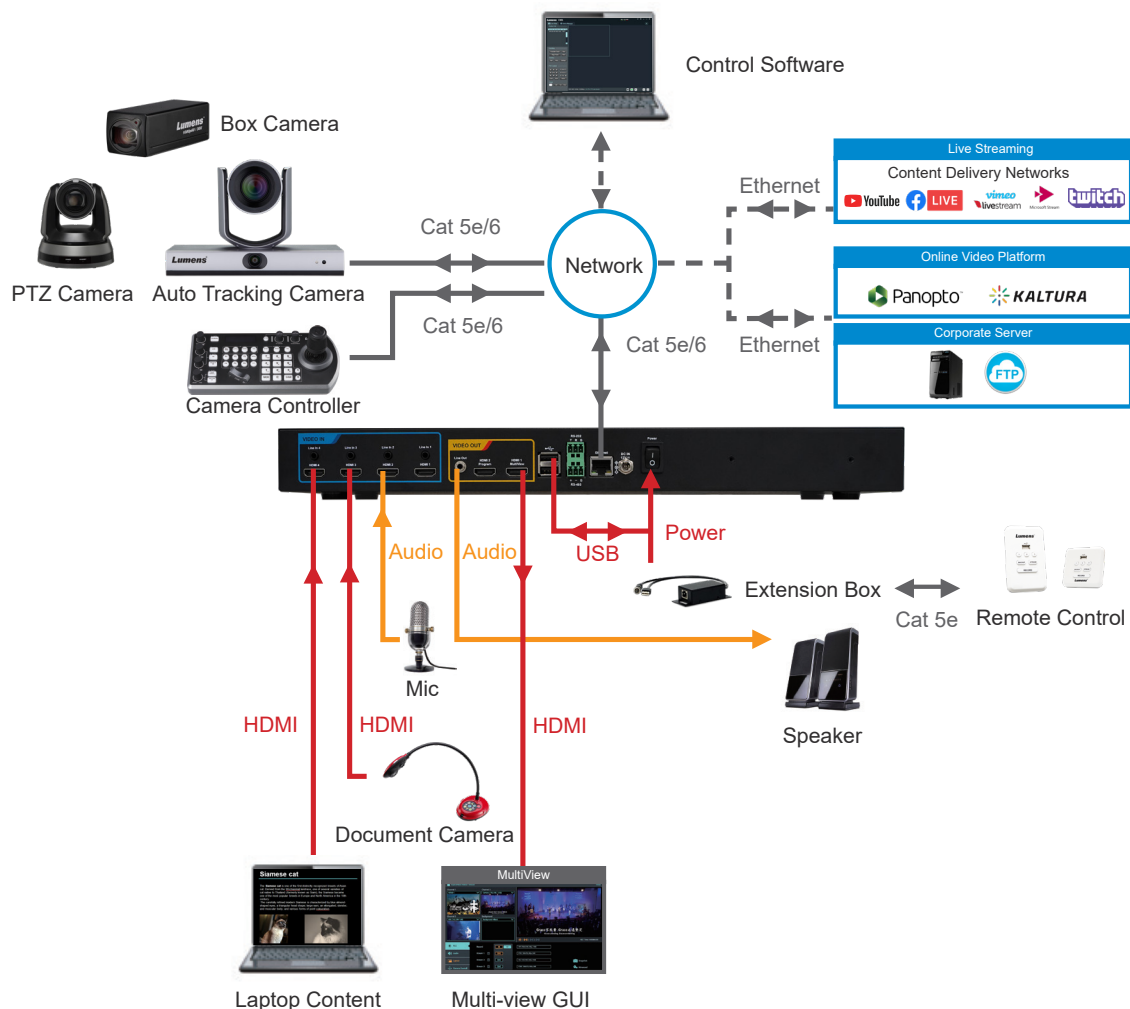


Applications

Streaming & Recording



Lecture Capture & Distance Learning

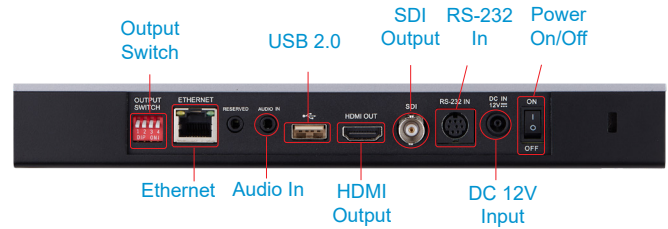


Overview

Front panel



Rear panel



Sensor	PTZ Camera: 1/2.8" 2.13MP CMOS Panoramic Camera: 1/2.5" 8.57MP CMOS
Video Format	Resolution: 1080p / 720p Frame Rate : 60 / 50 / 30 / 25
Video Output (HD) Interface	HDMI / SDI / USB2.0 / Ethernet
Optical Zoom	20x
Digital Zoom	12x
Viewing Angle	PTZ Camera: 71° Panoramic Camera: 112°
Panning Angle	+90 ~ -90°
Panning Speed	100°/sec
Tilting Angle	+90 ~ -30°
Tilting Speed	80°/sec
Auto-Tracking	Yes
Auto-Switching	Yes
Aperture	F1.6 ~ F3.5
Focal Length	4.9mm ~ 94mm
Shutter Speed	1/60 ~ 1/10,000
Minimum Object Distance	500mm
Video S/N Ratio	> 40dB
Minimum Illumination	1.0Lux @ (F1.6, AGC ON)
Focus System	Auto / Manual
Gain Control	Auto / Manual
White Balance	Auto / Manual

Exposure Control	Auto / Manual
WDR	Yes
2D NR	Yes
3D NR	Yes
Preset Positions	256
Multiple Video Stream	1 x PTZ Camera Main Stream 1 x Panoramic Camera Main Stream 1 x PTZ Camera Sub Stream
Audio Compression Format	AAC
Control Interface	RS-232 / Ethernet
Control Protocol	VISCA / VISCA over IP
PoE	PoE+ (IEEE802.3at)
Video Stream	RTSP / RTMP / RTMPS
Video Compression	HEVC / H.264 / MJPEG
Audio Input	Line In / MIC In (Phone Jack 3.5mm x1)
Audio Output	Ethernet / USB
IR Receiver	Yes
IR Remote Control	Yes
DC In	12V
Power Consumption	Max 21W
Weight	3.1lbs (1.4 kg)
Dimensions	9.6" x 5.7" x 6.5" (245 × 145 × 165 mm)